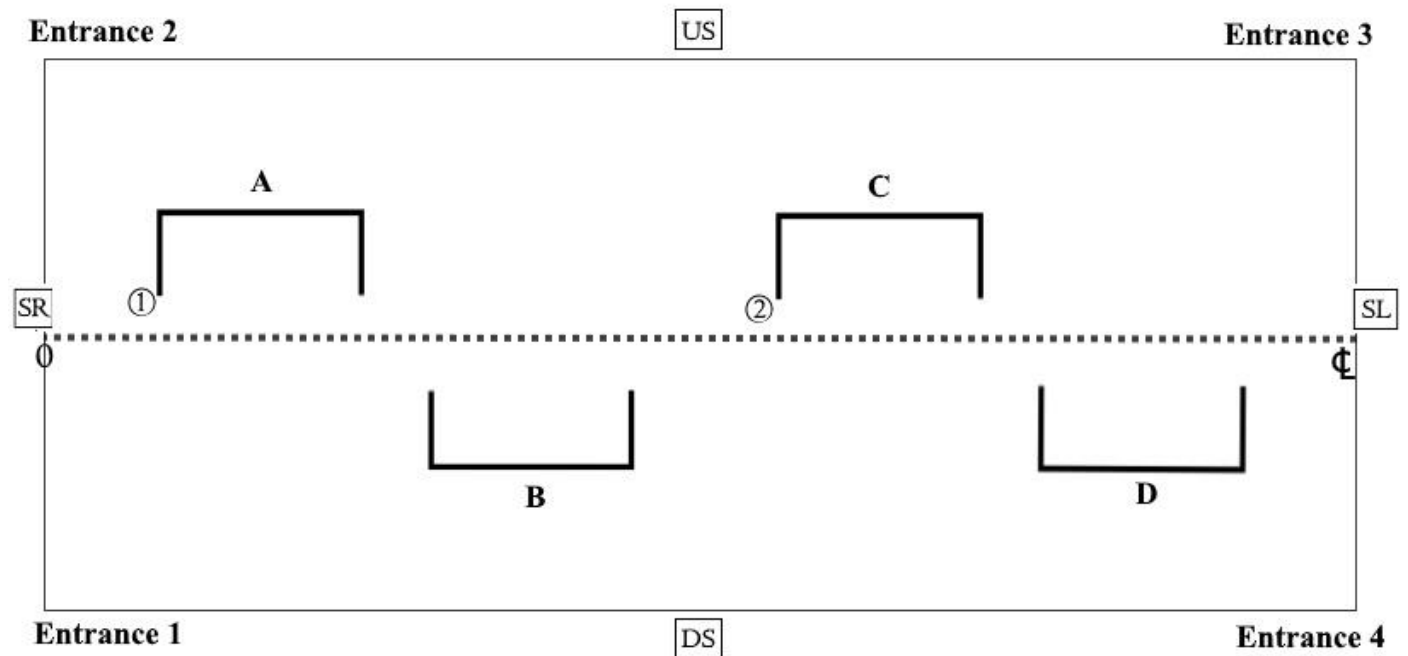


SPIKE CHART – THE PERMANENT WAY

1

INSTRUCTIONS: Centre line runs parallel with stage from SR to SL. All measurements made from SR, at zero (0)

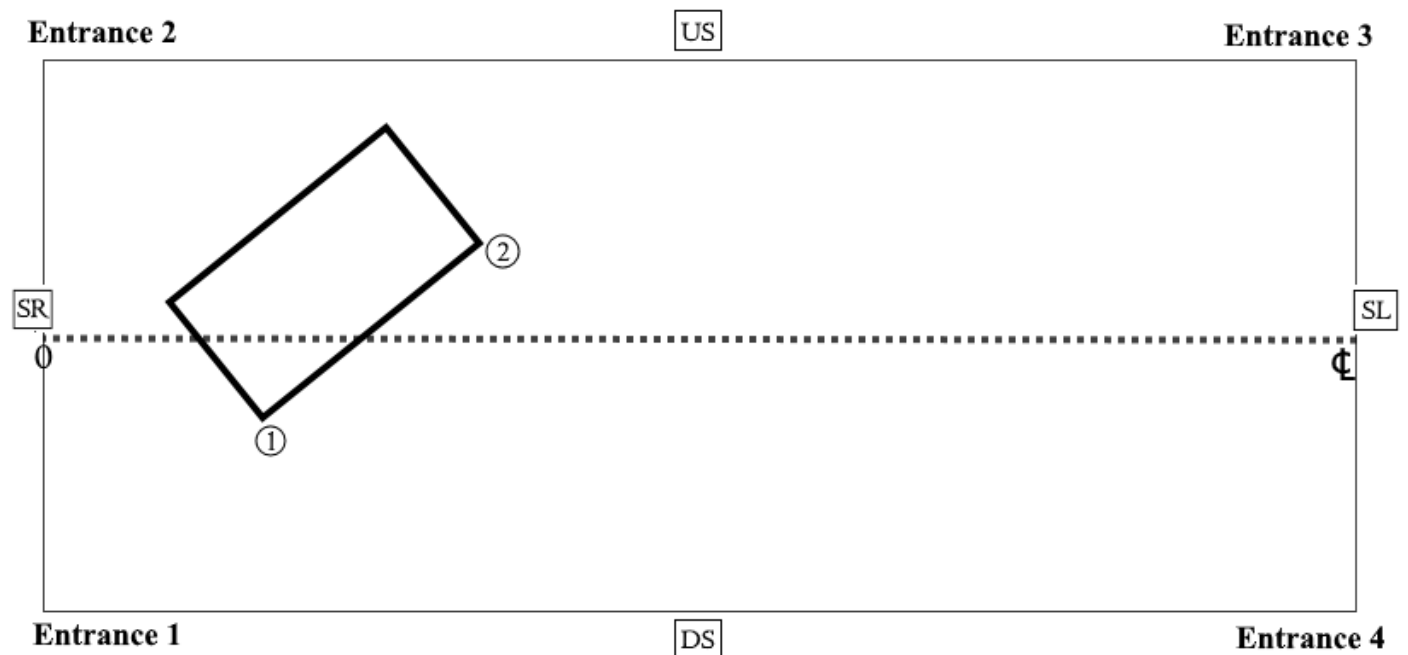
1. PRESET- TOP OF SHOW TO END OF SCENE 2



① 1m 85cm from SR

② 5m 33 cm from SR

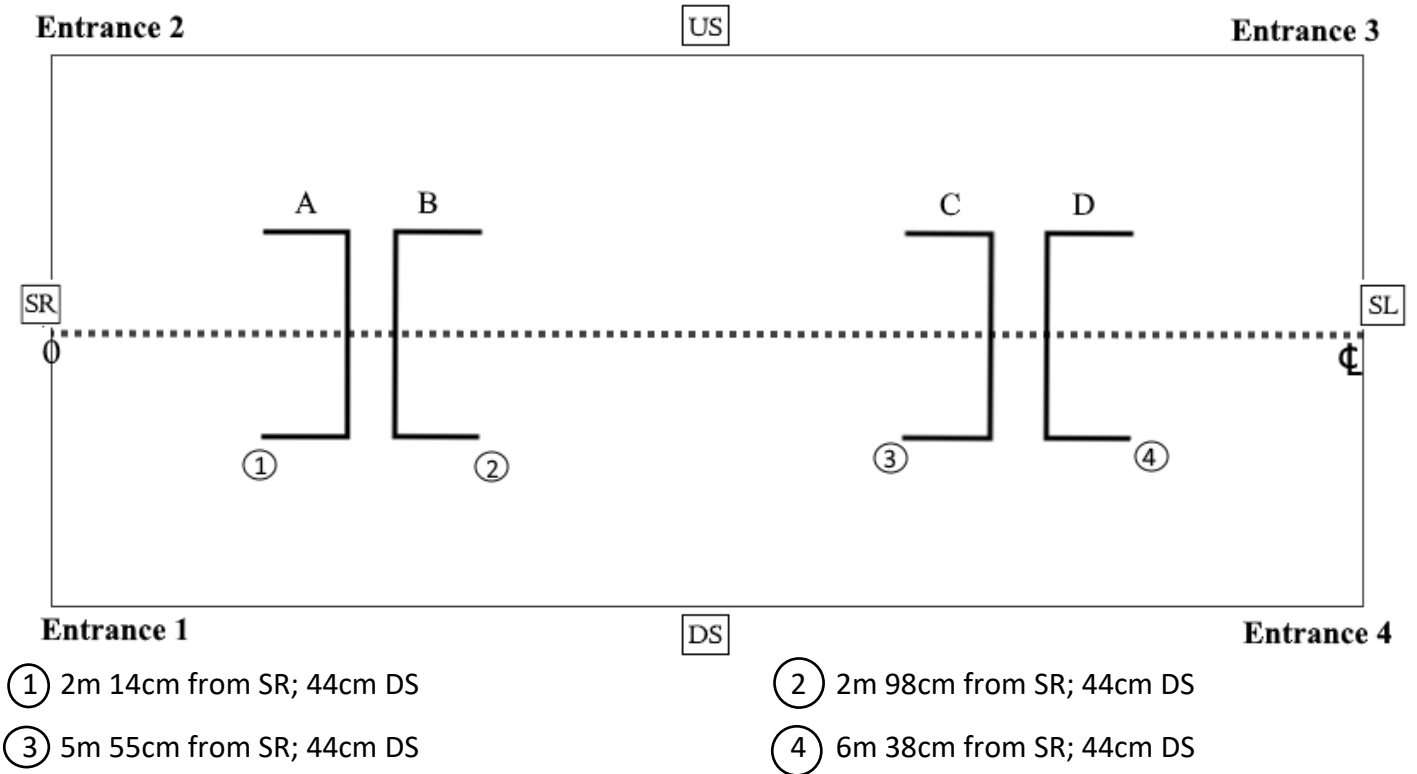
2. PERMANENT WAY GANG



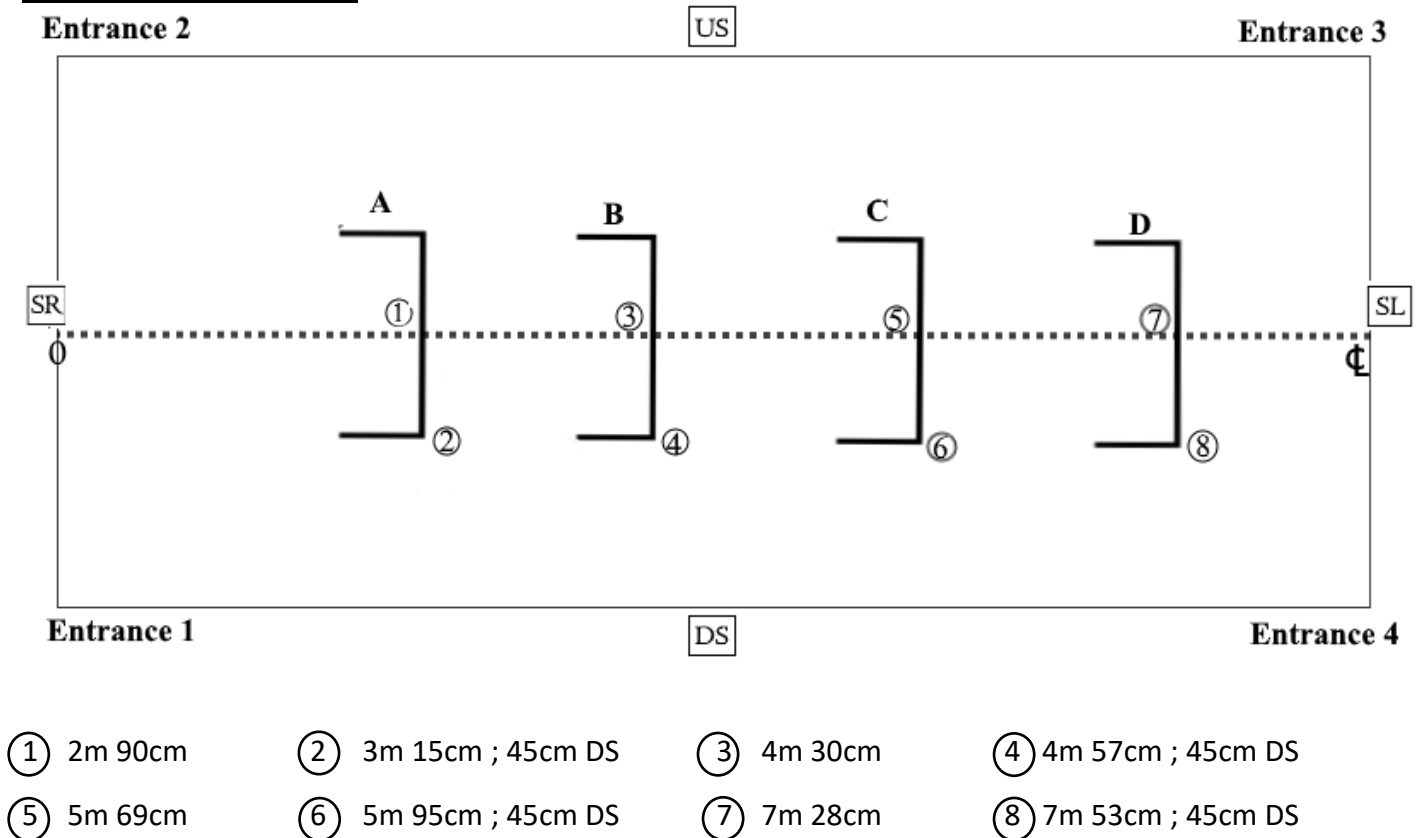
① 1m 56cm from SR; 10cm DS

② 2m 46cm from SR; 19cm US

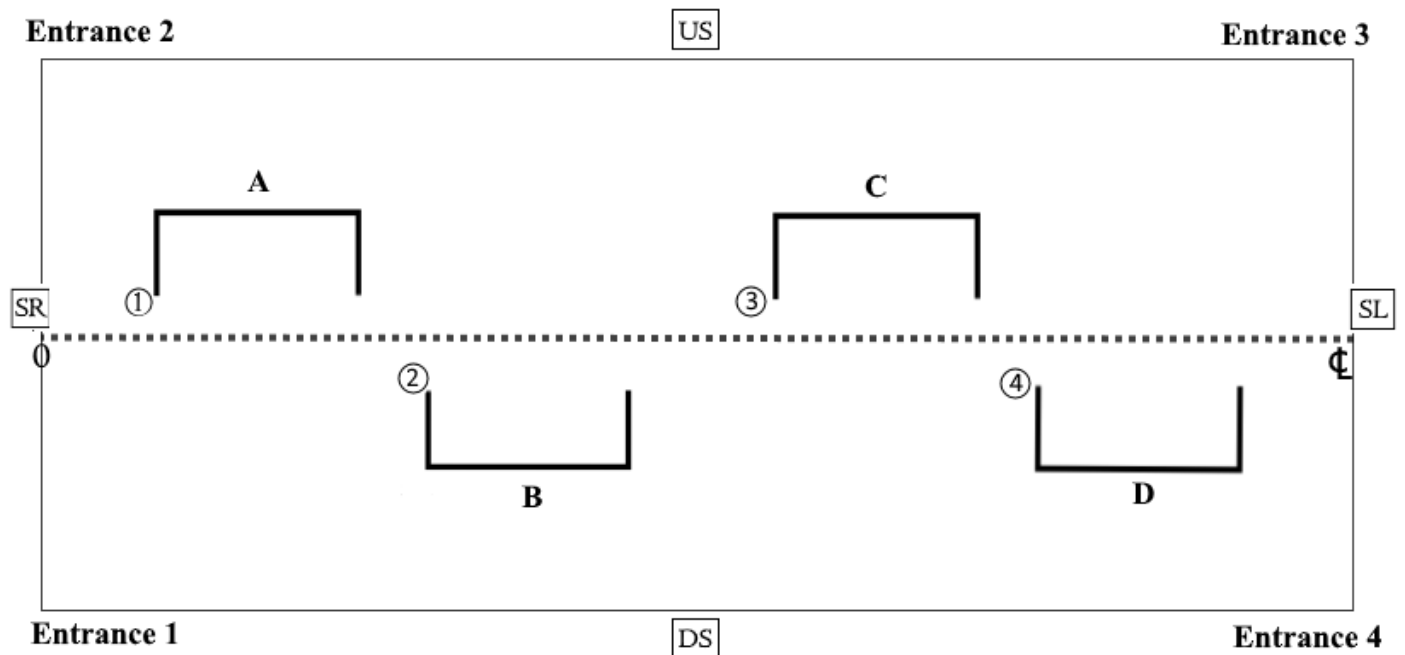
3. SOUTHALL – SCENE 7 BENCHES SPLIT CENTRE



4. CULLEN INQUIRY



5. MID CULLEN INQUIRY



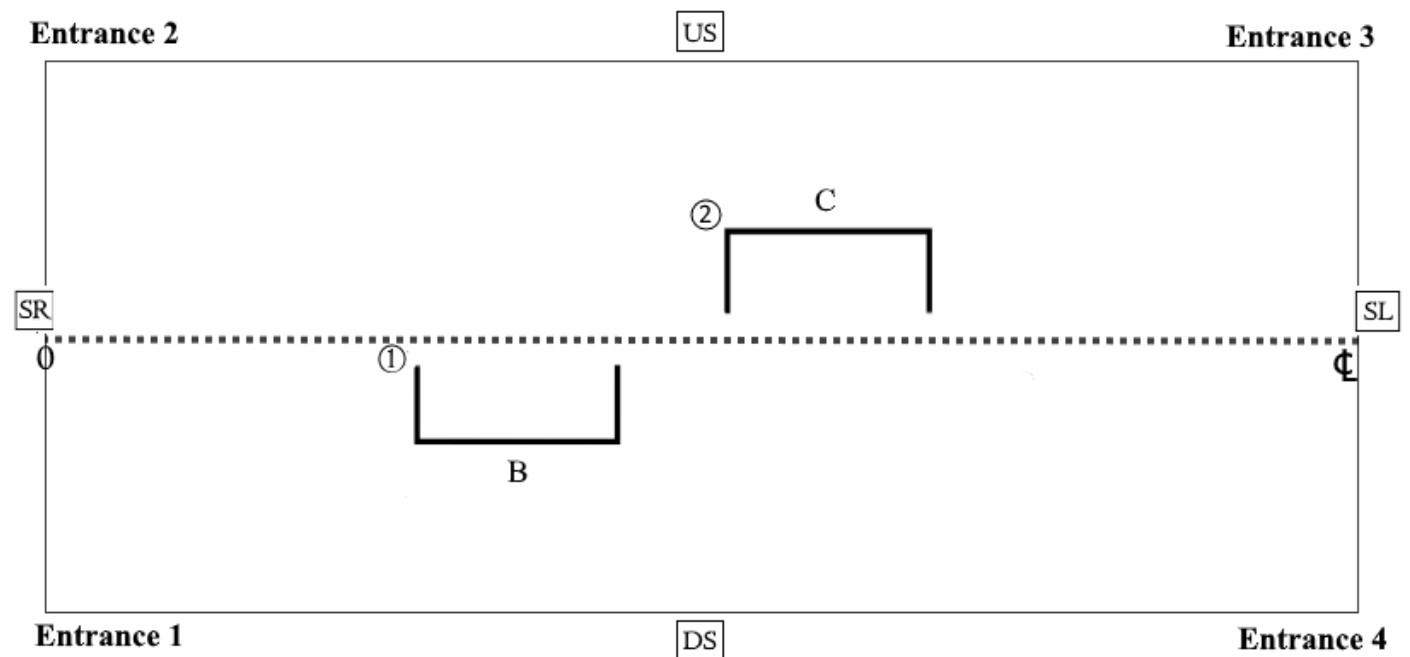
① 1m 27cm ; 5cm US

② 3m 22cm; 5cm DS

③ 5m 13cm; 5cm US

④ 7m 5cm; 5cm DS

6. FOR BENCH B – HATFIELD



① 2m 97cm ; 5cm DS (moved slightly)

② 5m 13cm ; 5cm US (same as previous position)